

TRANSPORT WORLD

INVERCARGILL - NEW ZEALAND

CANDY SHOP
**Toot
Sweets**
• INVERCARGILL, NZ •


Bill Richardson
**TRANSPORT
WORLD**


**CLASSIC
MOTORCYCLE
MECCA**


**DIG THIS
INVERCARGILL**


THE LODGES
AT TRANSPORT WORLD


TW
EVENTS &
INCENTIVES
DRIVING THE UNEXPECTED


**GEORGE
BEGG**
FESTIVAL

THE · GRILLE

Meccaspesso



NAU MAI, HAERE MAI – WELCOME TO TRANSPORT WORLD

One man's passion started it all.

Businessman Bill Richardson loved trucks: so much so, he made them both his life's work and his hobby.

Southern tourism hub Transport World began after Bill's daughter, Joc O'Donnell, decided to open his private collection to the

public in late 2015. Transport World has expanded to include multiple visitor attractions, accommodation, and an events and incentives business.

We're proud to have a gold Qualmark rating for each of our visitor products.



WHERE ARE WE?

The regional hub of Invercargill is an easy journey from urban centres including a two-hour flight from Auckland, and a gateway to destinations including Fiordland, Stewart Island-Rakiura, and The Catlins.



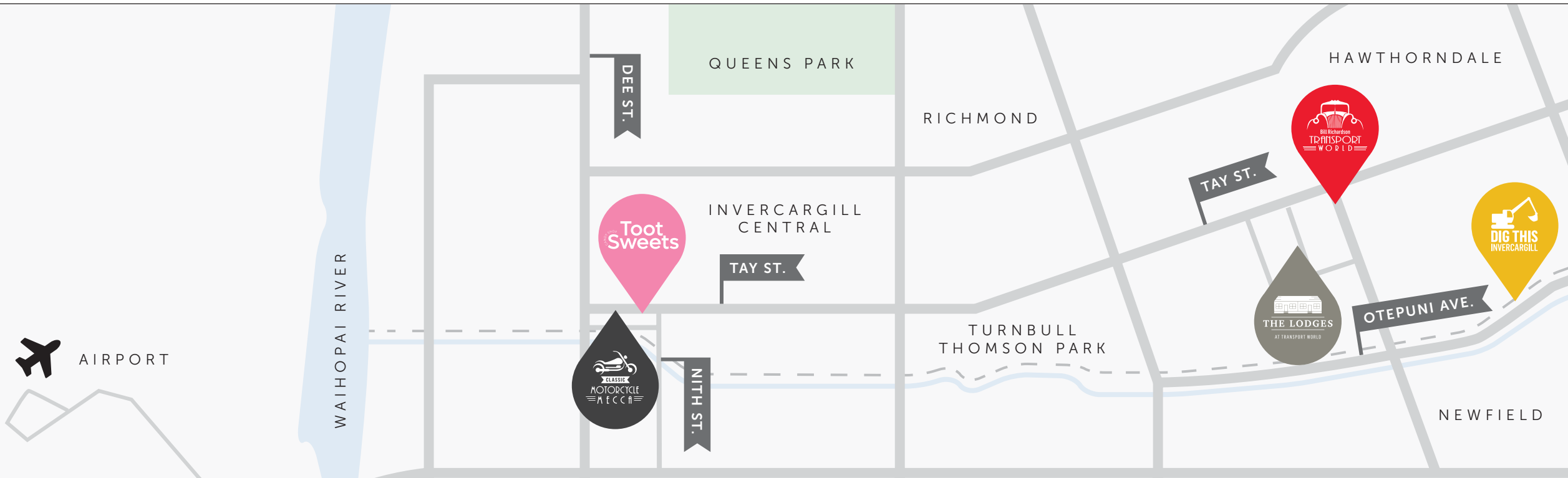
INVERCARGILL

- Significant development in the last six years
- New \$165 million central business development
- Streetscape upgrades
- Two new central city hotels – The Langlands, and Distinction Hotel coming 2024
- Several new dining establishments and cafes
- Bluff Oysters and delicious seafood
- Queens Park – Voted New Zealand's favourite public place
- Close to Stewart Island – 20-minute flight, or one-hour ferry



ATTRACTION SITE MAP

- Classic Motorcycle Mecca, located within Invercargill Central
- Toot Sweets, located within Invercargill Central
- Bill Richardson Transport World, a quick five-minute drive from Invercargill Central
- The Lodges at Transport World, directly opposite the road from Bill Richardson Transport World and a quick five-minute drive from Invercargill Central
- Dig This Invercargill, around the corner from
- Bill Richardson Transport World and a quick five-minute drive from Invercargill Central
- The Invercargill airport is a quick, five-minute drive from Invercargill Central





BILL RICHARDSON TRANSPORT WORLD

BILL RICHARDSON TRANSPORT WORLD

- The largest private automotive museum of its type in the world
- More than 300 vehicles, including collections of retro Kombis, Henry Ford Letter Cars, stunning 1930s V8s, a dizzying array of trucks of all makes and models and more than 200 vintage petrol pumps
- An immaculately restored 1940 Dodge Airflow tanker, fondly known as 'Tex': one of just three restored vehicles of its type worldwide
- Evocative and nostalgic exhibits, including memorabilia from the legendary Cadbury factory in Dunedin, vintage vaults, and wearable arts
- A whole family experience: a growing wearable arts collection, movie theatre, McDonald's Happy Meal Collection, Mousehole Trail, themed children's zones, including a room solely dedicated to Lego
- Themed bathrooms, fast becoming as famous as the collection, are guaranteed to delight



WHAT'S NEW?

- Group and FIT guided tours are available daily from 1 October 2023
- Accommodation transfers
- Regular rotating exhibition schedule



GENERAL ADMISSION & GUIDED TOURS

TICKET TYPE	GENERAL ADMISSION (one museum)	TURBO PASS (both museums)
ADULT	\$40 (rack rate)	\$70 (rack rate)
CHILD	\$20 (rack rate)	\$30 (rack rate)
SENIOR 65+	\$35 (rack rate)	\$60 (rack rate)
FAMILY PASS	\$100 (rack rate)	\$170 (rack rate)

THE MEGA PASS



Bill Richardson Transport World, Dig This & Classic Motorcycle Mecca

\$329

VISIT ALL 3
ATTRACTIONS

rack rate

AUDIO TOURS

Electronic headset tour highlights the family history and over 50 vehicles and displays throughout the collection.

\$10

PER HEADSET
(ADMISSION EXCL.)
rack rate

FIT GUIDED TOURS

Enhance your visit with the bonus of expert knowledge. Tour lasts one hour. FIT guided tours are available at 10am, 11.30am and 1.30pm daily.

\$60

ADMISSION +
GUIDED TOUR INCL.
rack rate

GROUP GUIDED TOURS

Guided tours provide a personalised experience with details bound to captivate all. Maximum of 10 guests per guide. Tour lasts one hour. Flexible departure times available.

\$200

PER GUIDE
(ADMISSION EXCL.)
rack rate

2023-2024 pricing. All prices listed include GST.

We require at least 24hrs notice to coordinate a group guided tour • Admission types give access for one day.



FOOD & BEVERAGE TAKEOVER

- Transport World now oversees food and beverage operations throughout The Grille café and Conference Centre
- Updated fit-out coming in The Grille
- Grille set-menu available on request
- Tables can be pre-booked with Paula (Reservations Coordinator)
- Packed lunches are available on request

THE-GRILLE



TRANSPORT WORLD EVENTS

GROUP CATERING CAPACITY

- A dedicated team of expert venue liaisons
- Capacity to host between 5 and 1000 guests
- Nine flexible venue spaces
- Full in-house catering service





THE LODGES AT TRANSPORT WORLD

THE LODGES AT TRANSPORT WORLD



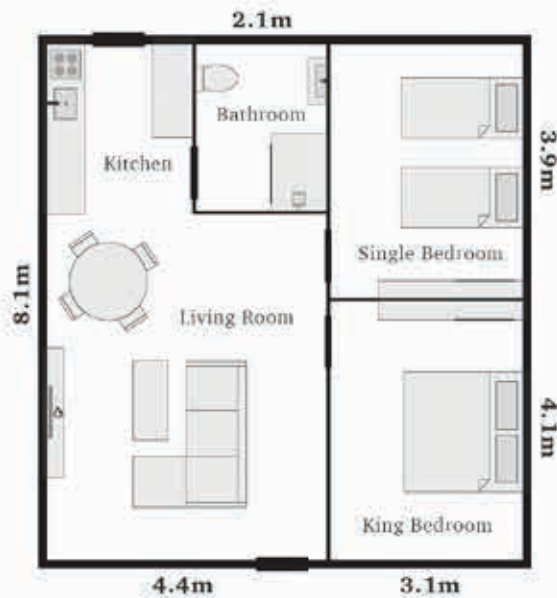
- Invercargill's only Gold Qualmark-rated accommodation property
- Invercargill's only high-end boutique apartment accommodation
- Eight boutique apartments with generous amenities
- Well-executed – unique, subtly styled with individual regional themes
- Conveniently located right next door to Bill Richardson Transport World on a quiet street
- Conveniently located across the road from The Grille café (cooked breakfast option)
- In-room continental breakfast available on request
- Stable core team – doing a great job
- Excellent reviews and feedback, 9.8 score on booking.com
- Strong sustainability focus
- Channel management connectivity



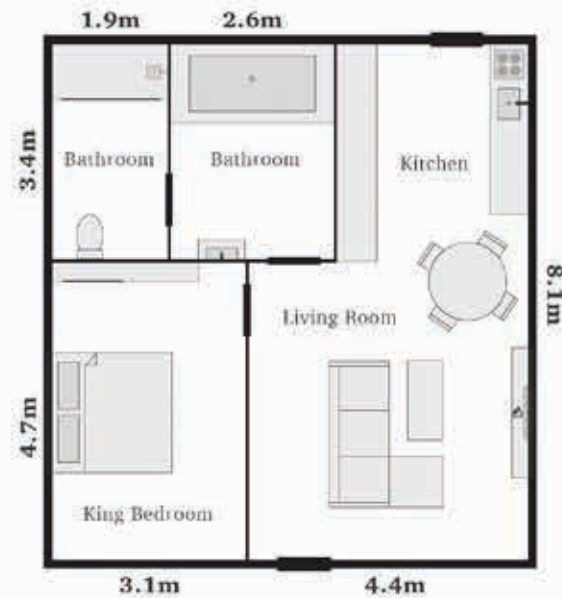
- All apartments are self-contained

THE LODGES - ROOM CONFIGURATIONS

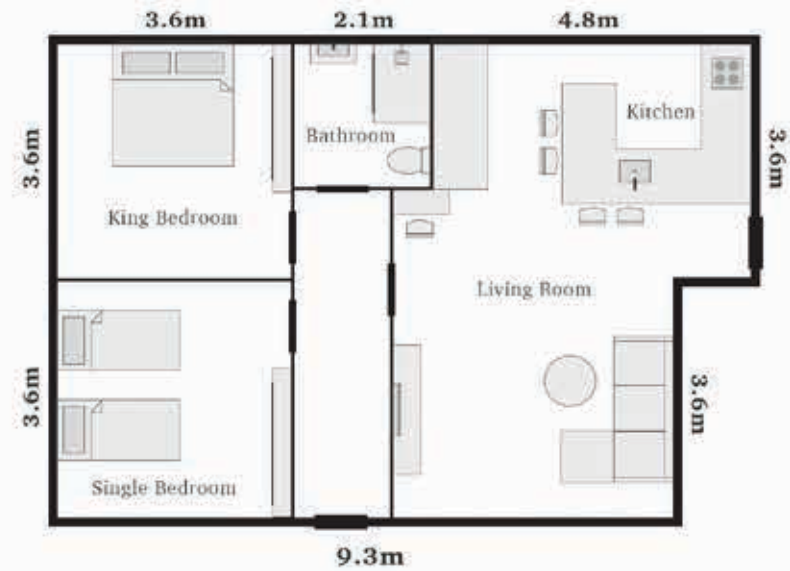
Main Layout



Honeymoon Suite

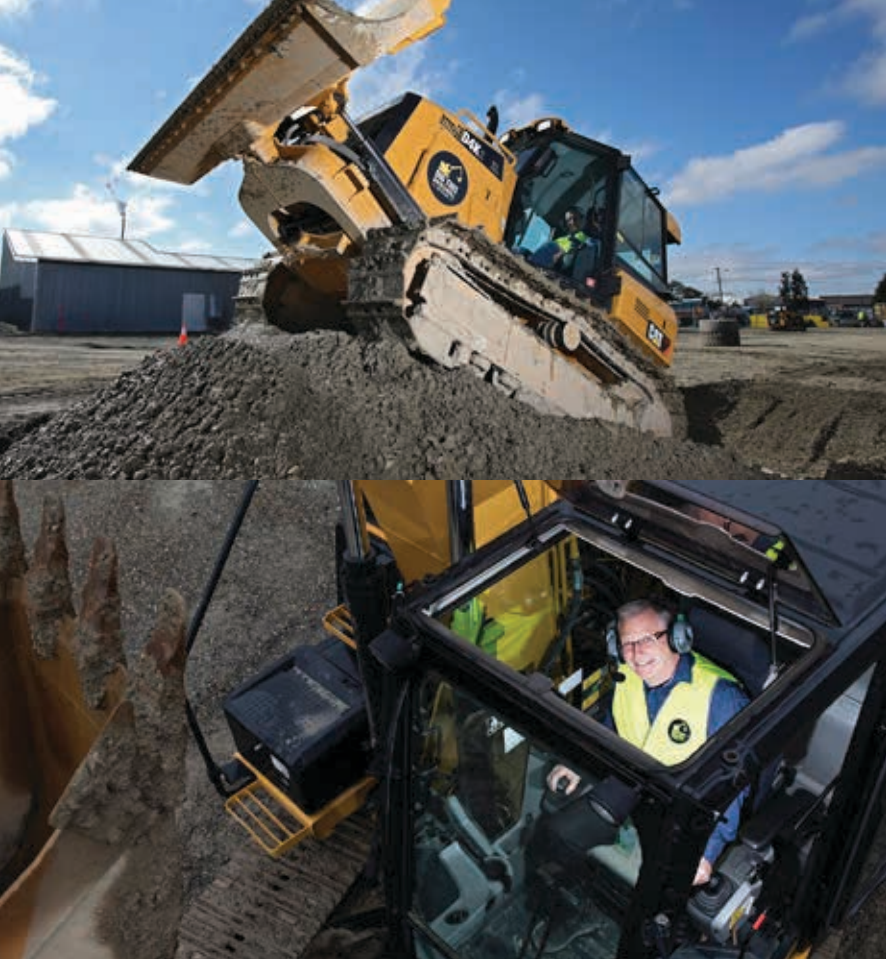


Art Cottage





DIG THIS INVERCARGILL



DIG THIS INVERCARGILL

- Perfect whether you're young or young-at-heart: Dig This Invercargill is suitable for everybody aged between 5 and 105
- A range of machinery to perform feats you never dreamed possible: from digger basketball, 360-degree spins, ploughing massive mounds of dirt with a bulldozer or a skid steer loader
- Crush a car: want to feel really powerful? Nothing gets the adrenaline pumping like the sound of crunching metal!
- Exhilarating but incredibly safe. All experiences (excluding Mini Digs) include a safety briefing and a 10-minute in-cab orientation
- Participants are breath-tested on site



WHAT'S NEW?

- Opening 1 October 2023 for the main season
- Returning with full deck of staff and machines
- Full group capacity returning (post COVID)
- New couple, and family rates coming
- Closed annually June, July, August (peak winter)



GROUP BOOKINGS

Dig This Invercargill is the ultimate thrill and our giant gravel pit has plenty of room. Put our field of machines to the test, side-by-side, in an experience that you won't find anywhere else.

Brace yourself for an unforgettable day out.

IMPORTANT INFORMATION

- Only 6-27 participating guests can be on the field at any one time. 6-18 guests is the preferred number. Spectators (100pax) are welcome to watch.
- Guests will be offered machines via a random draw, completed by the Dig This team. All participants will use either a bulldozer, digger or skid steer.
- All participants must be 14 years or older.
- Catering packages are available on request; extra charges apply.
- Advance bookings recommended. All group bookings must be made with at least four days' notice.
- All guests must be wearing closed toe footwear to participate.
- There is a strict no alcohol and drugs tolerance. All participants will be breath tested on-site.
- Participants must have a good understanding of spoken English.
- Those with disabilities can take part too - talk to the team to get involved.
- Your safety is paramount. All experiences are fully instructed.

CAPACITY	6-9 PAX	18 PAX	27 PAX	36 PAX	45 PAX	54 PAX
Total activity time (pp)	1 Hour	1 Hour	1 Hour	1 Hour	1 Hour	1 Hour
Total booking time (time required on-site)	1 Hour	2 Hours	3 Hours	4 Hours	5 Hours	6 Hours
Start time	Flexible; must be finished by 4pm	Flexible; must be finished by 4pm	Flexible; must be finished by 4pm	Flexible; must be finished by 4pm	9.30am-4.30pm	9.30am-4.30pm

THE RIDES

MINI DIG

MINI DIGGER AGE LIMIT 5 and over

TOTAL TIME 15 minutes **\$30**



Suitable for the young and young-at-heart, put our 1.7-tonne through its paces and try your hand at digging, dumping, and our giggle-worthy 'duck pond' challenge.

LOADS OF FUN

SKID STEER LOADER \$219

TOTAL TIME 1 hour AGE LIMIT 14 and over



An experience you never knew was missing from your life! Have a go in our four-tonne skid steer, stacking up to 20 tonnes of tyres. Speed around the Dig This yard in this nippy wee number.

5 TONNES OF FUN

BIG DIGGER \$219

TOTAL TIME 1 hour AGE LIMIT 12 and over



Get behind the controls of our five-tonne machine to dump, dig and push your way around our giant gravel pit. Guide it through delicate twirls and spins.

BIG DIG

BIGGER DIGGER \$279

TOTAL TIME 1 hour AGE LIMIT 12 and over



Dig to your heart's content before a round of digger basketball. Give our 15-tonner a 360-degree whirl and test your skills with digger gymnastics, including a handstand.

BIG PUSH

BULLDOZER \$279

TOTAL TIME 1 hour AGE LIMIT 14 and over



Did you love making sandcastles as a kid? Well, you won't find any seashells here, but you will get to ram a heap of dirt into a giant mound before making your way to the top and back.

MEGA DIG

BULLDOZER + DIGGER \$449

TOTAL TIME 2 hours AGE LIMIT 14 and over



Try your hand at our two most popular machines, a bulldozer and a digger. Dig to your heart's content, then give creating – and destroying – a whopping mound of dirt a crack.

AGGRESSION SESSION

DIGGER + CAR CRUSH \$329

TOTAL TIME 1 hour AGE LIMIT 14 and over



Have a go at a 360-degree spin, master a handstand, and try your hand at digger basketball – but remember, that's the warm-up. Once you're fired up, put your digger through its paces and crush an entire car.





CLASSIC MOTORCYCLE MECCA

CLASSIC MOTORCYCLE MECCA

- More than 300 spectacular bikes dating back to 1902, as well as sidecars and a prized artwork collection
- New Zealand's most diverse motorcycle collection: with classic bikes hailing from throughout Europe, the United States, Great Britain, Japan, motocross and speedway, and even a few quirky Kiwi-built and custom numbers
- A hero bike display that houses bikes from John Britten and Brough Superior, as well as tributes to greats like Kiwi speedway icon Ivan Mauger and Invercargill legend Burt Munro
- Up-close view of all the motorcycles: we don't hide bikes away in glass boxes, so visitors can admire every little detail
- Ever-famous quirky themed bathrooms, plus delightful styling features celebrating everything wheeled throughout the collection
- Meccapresso café located onsite



WHAT'S NEW?

- New permanent John Britten exhibit (four bikes) – Te Papa houses one
- New brand-new basement development, the George Begg Bunker
- Accommodation Transfers
- Updated rates and pricing





THE HANDLE BAR

SPECIAL GROUP DINNER VENUE

- The perfect place to host an intimate sit-down dinner or a sophisticated cocktail party overlooking Invercargill's new inner city
- Combine your dinner with a visit to Classic Motorcycle Mecca – exclusive after-hours museum visits are available with dinner bookings
- Discover a striking venue full of character and atmosphere – guests will delight in the craftsmanship of the bikes and building
- Exposed brick, gleaming tongue-and-groove detail, and astounding, up-close views of the world's most spectacular bikes round out this space's unique ambience
- The venue showcases the sympathetic restoration of two heritage buildings
- In-built AV system for ease of experience
- Stunning centrepiece bar showcasing the museum's heritage
- Capacity - 60pax seated, 150pax cocktail



GENERAL ADMISSION & GUIDED TOURS

TICKET TYPE	GENERAL ADMISSION (one museum)	TURBO PASS (both museums)
ADULT	\$40 (rack rate)	\$70 (rack rate)
CHILD	\$20 (rack rate)	\$30 (rack rate)
SENIOR 65+	\$35 (rack rate)	\$60 (rack rate)
FAMILY PASS	\$100 (rack rate)	\$170 (rack rate)

THE MEGA PASS



Bill Richardson Transport World, Dig This & Classic Motorcycle Mecca

\$329

VISIT ALL 3
ATTRACTIONS

rack rate

AUDIO TOURS

Electronic headset tour highlights the museums history and over 50 motorcycles throughout the collection.

\$10

PER HEADSET
(ADMISSION EXCL.)
rack rate

GROUP GUIDED TOURS

Guided tours provide a personalised experience with details bound to captivate all. Maximum of 10 guests per guide. Tour lasts one hour. Flexible departure times available.

\$200

PER GUIDE
(ADMISSION EXCL.)
rack rate

2023-2024 pricing. All prices listed include GST.

We require at least 24hrs notice to coordinate a group guided tour • Admission types give access for one day.

CANDY SHOP

Toot Sweets

• INVERCARGILL, NZ •



NEW PRODUCT: TOOT SWEETS

Get set for something whimsical.

Opening in Invercargill in 2023/2024, lolly shop Toot Sweets will make all of your candy-floss coloured fantasies come to life.

From the team behind Transport World, Toot Sweets will be fanciful, playful and nostalgic: it's going to be an explosion of fun right in the inner-city.

Commissionable product under development.

TOOT SWEETS
CANDY SHOP



FIT ITINERARY - INVERCARGILL

2 NIGHTS, 1 DAY, 3 ATTRACTIONS

DAY ONE	Arrvie late afternoon in Invercargill	1.00PM	Bill Richardson Transport World 491 Tay Street, Invercargill Experience a guided tour at Bill Richardson Transport World One man's passion started it all. Experience a family legacy that has become the largest private automotive museum of its type in the world.
STAY	The Lodges at Transport World 23 Anglem Street, Invercargill Beautifully styled, with supreme comfort and faultless hospitality, a stay at The Lodges at Transport World is like coming home – but better. *Enjoy a continental breakfast at The Lodges at Transport World or a cooked breakfast directly across the road at The Grille Cafe.	3.30PM	Dig This Invercargill 84 Otepuni Avenue, Invercargill New Zealand's only heavy machinery playground is grunty fun for everyone. Unleash your big kid and learn to operate bulldozers, diggers, mini diggers and skid steers in our giant gravel pit. For an adventure not to be missed, tick Dig This Invercargill off your bucket list today.
DAY TWO	Visit all three of our attractions	4.30PM	Depart Invercargill
10.00AM	Classic Motorcycle Mecca 25 Tay Street, Invercargill Visit Classic Motorcycle Mecca, book an audio tour Ride into yesterday with Classic Motorcycle Mecca. The Southern Hemisphere's leading motorcycle collection is regularly described as 'stunning' and 'mind-blowing' in scale.		
12.00PM	The Grille Cafe 491 Tay Street, Invercargill Lunch at The Grille Café, Bill Richardson Transport World		

• Summer sunset time 10pm

To book, contact: reservations@transportworld.nz

FIT ITINERARY - INVERCARGILL

1 NIGHT, 2 DAYS, 3 ATTRACTIONS

DAY ONE	Travel to Invercargill	10.00AM	Classic Motorcycle Mecca 25 Tay Street, Invercargill Visit Classic Motorcycle Mecca, book an audio tour Ride into yesterday with Classic Motorcycle Mecca. The Southern Hemisphere's leading motorcycle collection is regularly described as 'stunning' and 'mind-blowing' in scale.
1.00PM	Dig This Invercargill 84 Otepunu Avenue, Invercargill New Zealand's only heavy machinery playground is grunty fun for everyone. Unleash your big kid and learn to operate bulldozers, diggers, mini diggers and skid steers in our giant gravel pit. For an adventure not to be missed, tick Dig This Invercargill off your bucket list today.	12.00PM	The Grille Cafe 491 Tay Street, Invercargill Lunch at The Grille Café, Bill Richardson Transport World
STAY	The Lodges at Transport World 23 Anglem Street, Invercargill Beautifully styled, with supreme comfort and faultless hospitality, a stay at The Lodges at Transport World is like coming home – but better. *Enjoy a continental breakfast at The Lodges at Transport World or a cooked breakfast directly across the road at The Grille Cafe.	1.30PM	Bill Richardson Transport World 491 Tay Street, Invercargill Experience a guided tour at Bill Richardson Transport World One man's passion started it all. Experience a family legacy that has become the largest private automotive museum of its type in the world.
DAY TWO	Visit both of our museums	4.00PM	Depart Invercargill
9.00AM	Meccaspresso cafe 25 Tay Street, Invercargill Coffee at Meccaspresso cafe, Classic Motorcycle Mecca		

• Summer sunset time 10pm

To book, contact: reservations@transportworld.nz

GROUP ITINERARY - INVERCARGILL & STEWART ISLAND

2 NIGHTS, 2 DAYS, 2 ATTRACTIONS

DAY ONE	Visit both of our museums	6.00PM	The Handle Bar 25 Tay Street, Invercargill Host your guests with a special dinner and delicious Southland fare at The Handle Bar, Classic Motorcycle Mecca
12.00PM	The Grille Cafe 491 Tay Street, Invercargill Lunch at The Grille Café, Bill Richardson Transport World or in the Transport World conference centre	DAY TWO	Stewart Island
1.00PM	Bill Richardson Transport World 491 Tay Street, Invercargill Experience a guided tour at Bill Richardson Transport World One man's passion started it all. Experience a family legacy that has become the largest private automotive museum of its type in the world.	ALL DAY	Visit Stewart Island
5.00PM	Classic Motorcycle Mecca 25 Tay Street, Invercargill Visit Classic Motorcycle Mecca, book an audio tour Ride into yesterday with Classic Motorcycle Mecca. The Southern Hemisphere's leading motorcycle collection is regularly described as 'stunning' and 'mind-blowing' in scale.	STAY	Invercargill

• Summer sunset time 10pm

To book, contact: reservations@transportworld.nz

GROUP ITINERARY - INVERCARGILL & STEWART ISLAND

3 NIGHTS, 3 DAYS, 3 ATTRACTIONS

DAY ONE	Visit both of our museums	STAY	Invercargill
10.00AM	Classic Motorcycle Mecca 25 Tay Street, Invercargill Visit Classic Motorcycle Mecca, book an audio tour Ride into yesterday with Classic Motorcycle Mecca. The Southern Hemisphere's leading motorcycle collection is regularly described as 'stunning' and 'mind-blowing' in scale.	DAY TWO	Stewart Island
12.00PM	The Grille Cafe 491 Tay Street, Invercargill Lunch at The Grille Café, Bill Richardson Transport World or in the Transport World conference centre	ALL DAY	Visit Stewart Island
1.30PM	Bill Richardson Transport World 491 Tay Street, Invercargill Experience a guided tour at Bill Richardson Transport World One man's passion started it all. Experience a family legacy that has become the largest private automotive museum of its type in the world.	DAY THREE	Stewart Island
		Refer to group booking page for timings	Dig This Invercargill 84 Otepuni Avenue, Invercargill New Zealand's only heavy machinery playground is grunty fun for everyone. Unleash your big kid and learn to operate bulldozers, diggers, mini diggers and skid steers in our giant gravel pit. For an adventure not to be missed, tick Dig This Invercargill off your bucket list today.

• Summer sunset time 10pm

To book, contact: reservations@transportworld.nz

GROUP ITINERARY - INVERCARGILL

OVERNIGHT, 1 DAY, 3 ATTRACTIONS

DAY ONE	Visit all three of our attractions	-	Bill Richardson Transport World 491 Tay Street, Invercargill Experience a guided tour at Bill Richardson Transport World One man's passion started it all. Experience a family legacy that has become the largest private automotive museum of its type in the world.
10.00AM - 5.00PM	Utilise our shuttle to transfer guests between Dig This, Bill Richardson Transport World and Classic Motorcycle Mecca		
Refer to group booking page for timings	Dig This Invercargill 84 Otepunu Avenue, Invercargill New Zealand's only heavy machinery playground is grunty fun for everyone. Unleash your big kid and learn to operate bulldozers, diggers, mini diggers and skid steers in our giant gravel pit. For an adventure not to be missed, tick Dig This Invercargill off your bucket list today.	STAY	Invercargill
-	Classic Motorcycle Mecca 25 Tay Street, Invercargill Visit Classic Motorcycle Mecca, book an audio tour Ride into yesterday with Classic Motorcycle Mecca. The Southern Hemisphere's leading motorcycle collection is regularly described as 'stunning' and 'mind-blowing' in scale.		

• Summer sunset time 10pm

To book, contact: reservations@transportworld.nz

KEY CONTACTS



Courtney Russell

Tourism Operations Manager



Hannah Whyte

General Manager - Marketing & Sales

*Takes care of
your tourism
booking*



Paula McKeown

Reservations Administrator



Ging Scott

The Lodges Manager



Catherine Skerrett

Venue Liaison

*Helps you create
spectacular events*

*Ensures you
have a fabulous stay*